



Harmonious Living,
Perfect Surfaces

CARVING & MATT COLLECTION
600 X 1200 MM

www.signovatile.com

UNIQUE SPACES FOR UNIQUE PEOPLE

Lorem Ipsum is simply dummy text of the printing and typesetting industry. Lorem Ipsum has been the industry's standard dummy text ever since the 1500s.



Introduction About Signova Tiles

Signova Tiles is a leading manufacturer of high-quality ceramic tiles in the worldwide ceramic market. With over 25 years of experience, Signova Tiles has established itself as a leading name in the global ceramic tile industry.

We have spent 25 years bringing together creative design and quality to provide value, elegance, and exceptional customer service.

Customers are the cornerstone of our business, and we are dedicated to staying at the forefront of product innovation.

Combining innovative design, excellent quality, and cutting-edge technology, Signova transforms ordinary spaces into works of art, reflecting luxury, durability, and style.

Introduction Our Product

Designed to offer a blend of aesthetic elegance and superior functionality, it has a smooth surface that incorporates a "carving" effect.

This carving process involves the detailed engraving of patterns and textures onto the tile, which creates a three-dimensional effect that adds depth and character to the space.

The effect is a beautiful interplay of light and shadow, elevating the space with an exquisite charm where beauty and durability unite.



MARQUE CARVING



UNIQUE SPACES
FOR UNIQUE PEOPLE

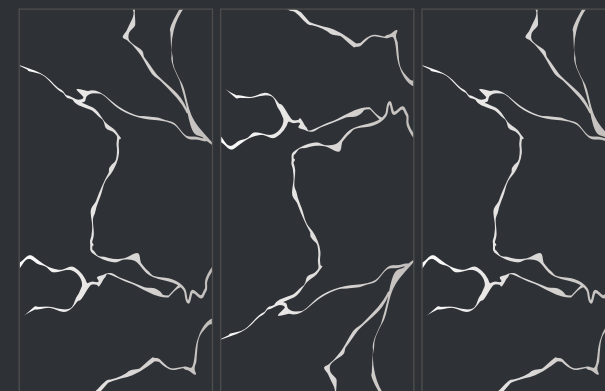
MARQUE CARVING

The Marque Carving Collection is crafted for those who appreciate detail, depth, and design that stands apart. Each surface features refined carved patterns inspired by natural stone artistry, creating a tactile richness that elevates any interior. With bold veins and sculpted textures, the collection transforms walls and floors into expressive canvases of luxury.

Ideal for statement spaces, premium residences, hospitality environments, and contemporary commercial projects, Marque Carving brings a distinctive personality to every setting. It is where craftsmanship meets creativity — delivering surfaces that feel artistic, exclusive, and truly unforgettable.

Design Beyond The Ordinary.

Where craftsmanship,
innovation, and art
converge true
masterpieces are born!



RESISTANT
TO UV



RESISTANT TO
IMPACT



HIGH PHYSICAL
STRENGTH



LOW WATER
ABSORPTION



RESISTANT TO
ACID AND ALKALI



RESISTANT TO
CHEMICALS



RESISTANT TO
SCRATCHES



RESISTANT TO
STAINS



RESISTANT TO
FIRE AND HEAT



DIMENSIONAL
STABILITY



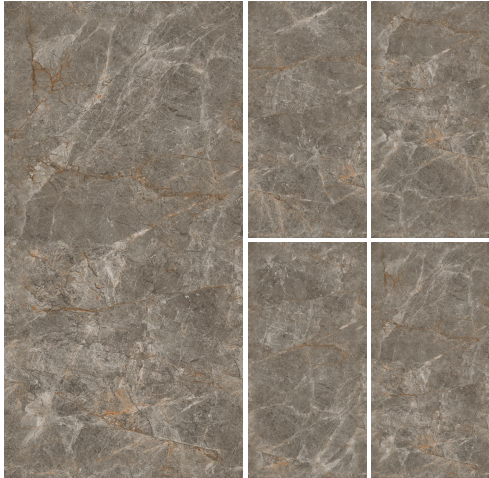
RESISTANT TO
FROST

Ancient **Pearl**



Random 4 End Match

Ancient **Steel**



Random 4 End Match

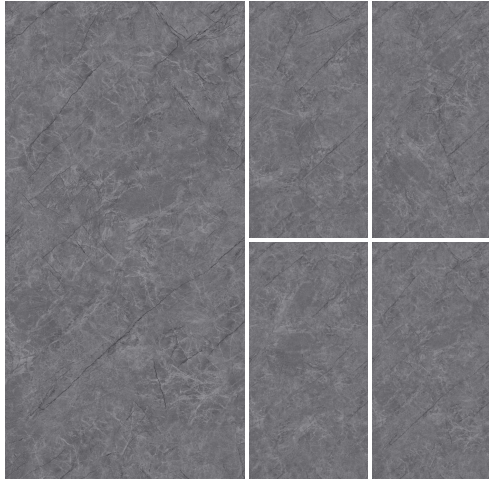


Orchid **Grey**



Random 4 End Match

Orchid **Dove**



Random 4 End Match

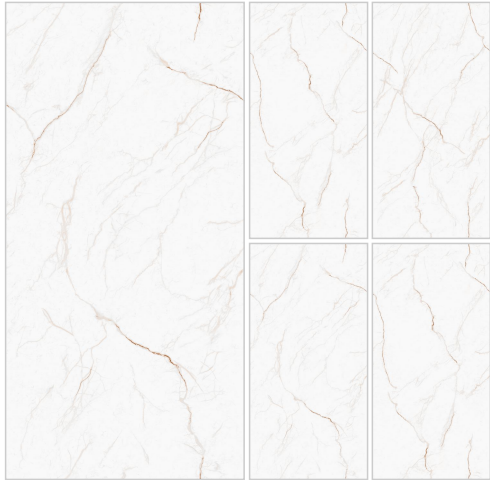
Thickness
9mm

MARQUE
CARVING

Size
600x1200mm



Pearl **White**



Random 3

End Match

Pearl **Crema**



Random 3

End Match

Revanta **Snow**



Random 4

End Match

Revanta **Grey**



Random 4

End Match



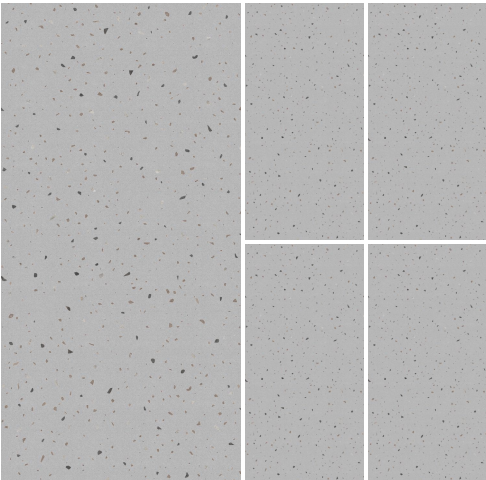
Pixel **Grey**



Random 4



Pixel **Dove**



Random 4

Pixel **Beige**



Random 4

Pixel **Sandy**



Random 4



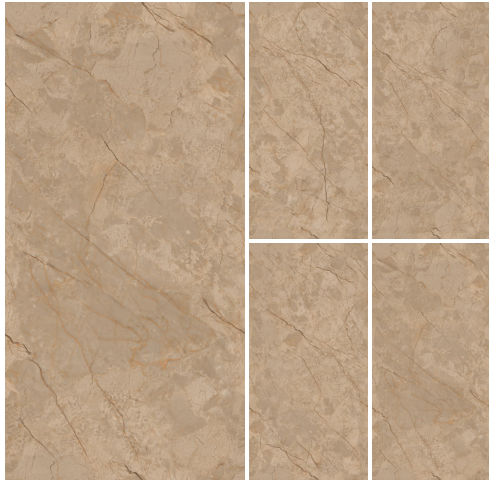
Imperial **Beige**



Random 4

End Match

Imperial **Brown**



Random 3

End Match

Armani **Fog**



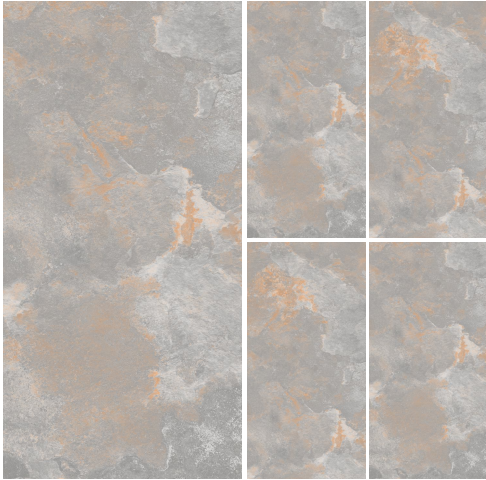
Random 3

Armani **Gris**



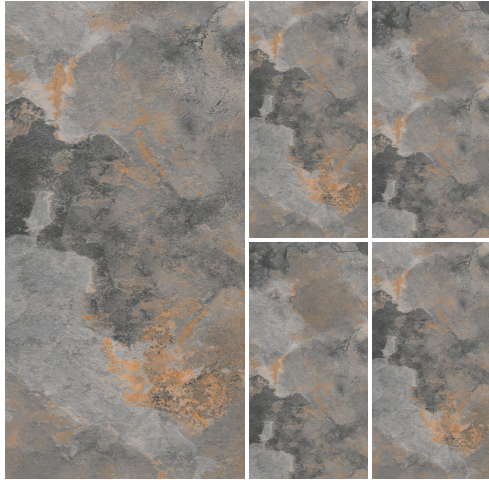
Random 3

Blasto **Grey**



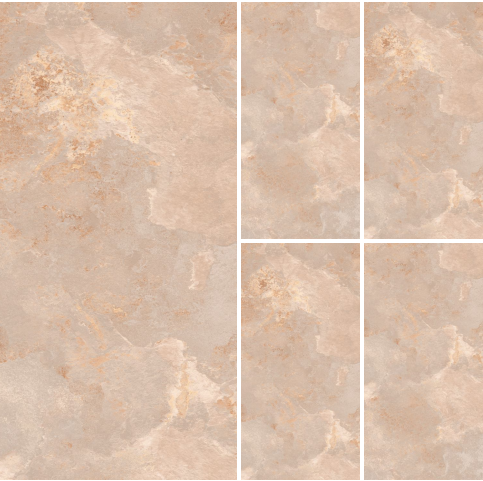
Random 2

Blasto **Slate**



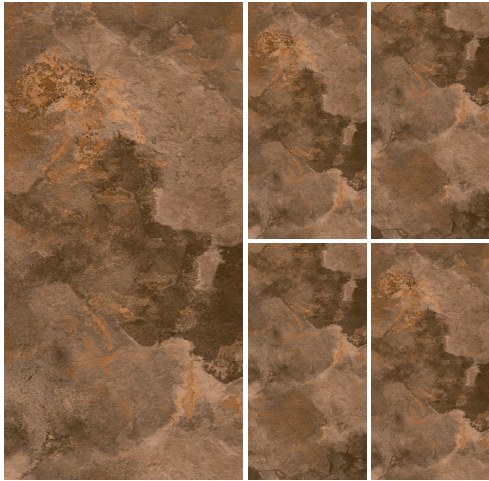
Random 2

Blasto **Gold**



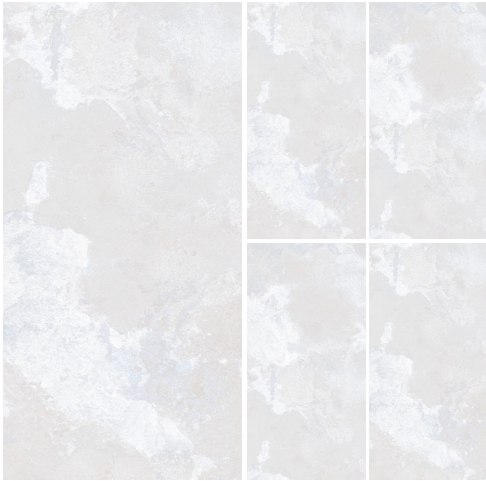
Random 2

Blasto **Coffee**



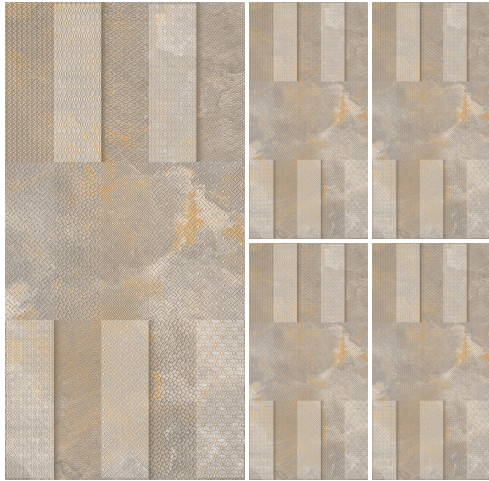
Random 2

Blasto **White**



Random 2

Blasto **HL-1**

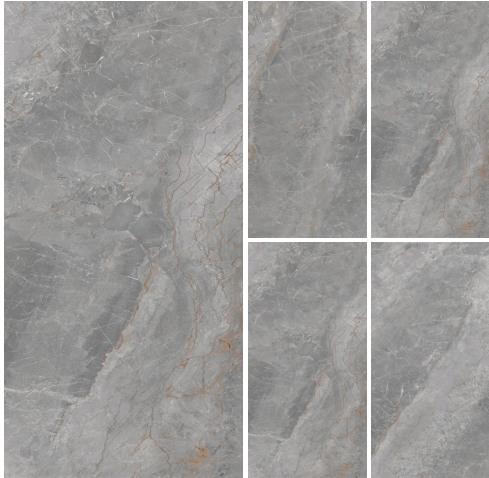


Exotica **Ice**



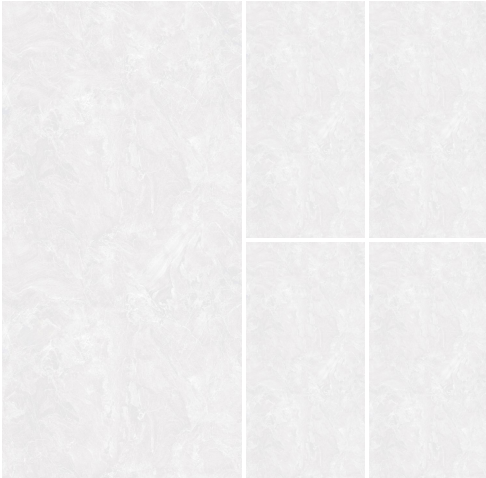
Random 3

Exotica **Grey**

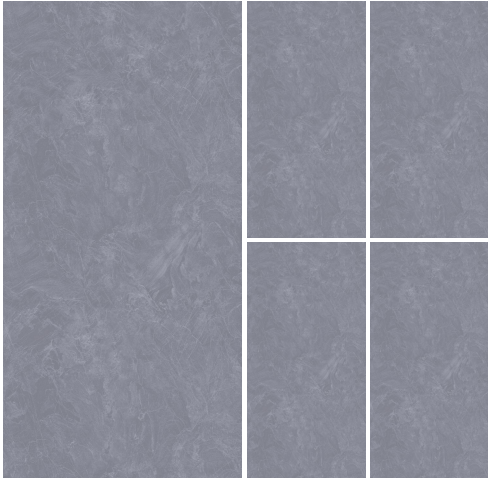


Random 3

Florence **White**



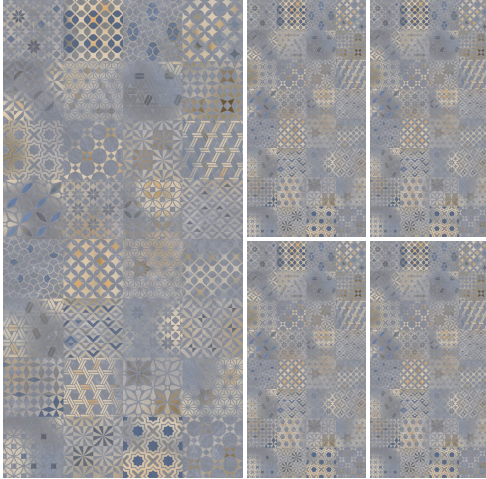
Florence **Navy**



Exotica **HL-1**



Florence **HL-1**



Phantom **Mashroom**



Random 3

Phantom **Brown**



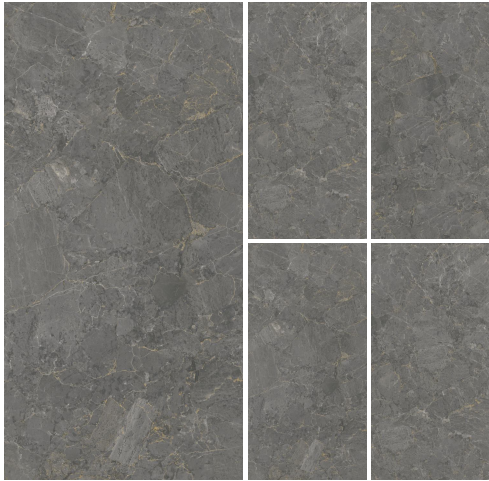
Random 3

Phantom **Ice**



Random 3

Phantom **Grey**



Random 3



Phantom **Brown**
Phantom **Mashroom**

Spyder **Beige**



Random 3



Spyder **Brown**



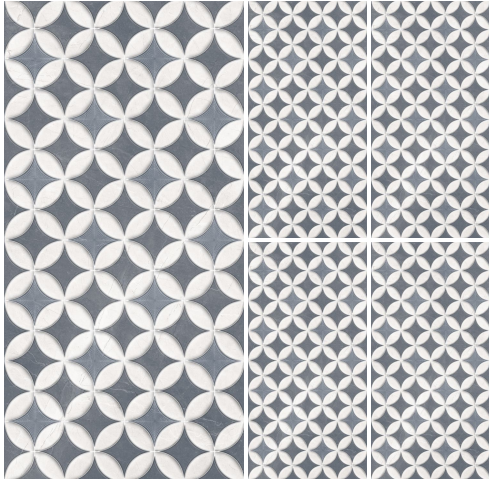
Random 3

Spyder **Grey**

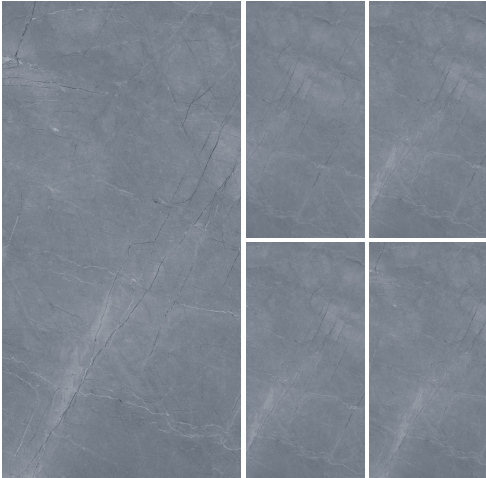


Random 3

Spyder **HL-1**



Spyder **Slate**



Random 3

Spyder **Pearl**



Random 3



Spyder **Silver**



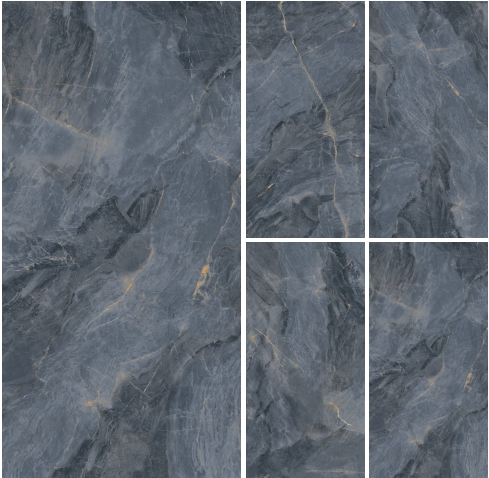
Random 3

Volcano **Gray**



Random 4

Volcano **Blue**



Random 4

Volcano **Sky**



Random 4



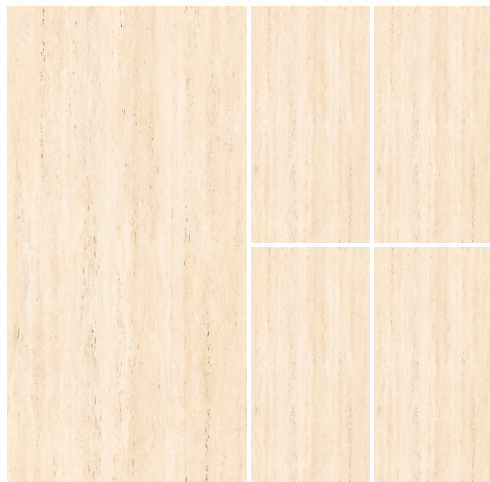
Thickness
9mm

MARQUE
CARVING

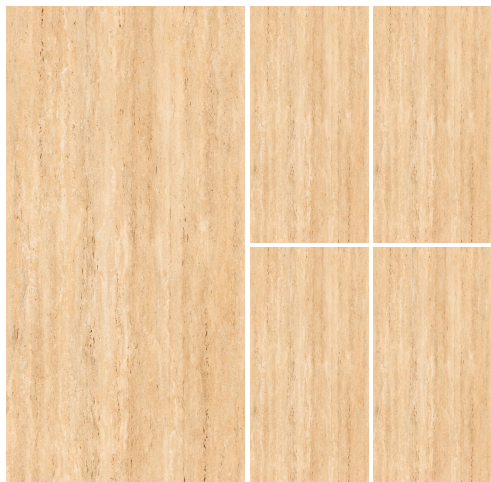
Size
600x1200mm



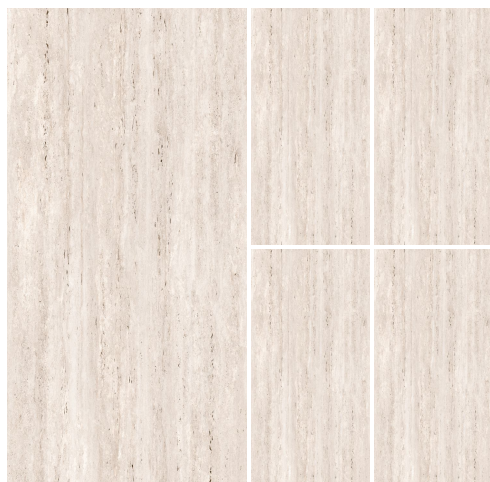
Travertino **Beige**



Travertino **Brown**



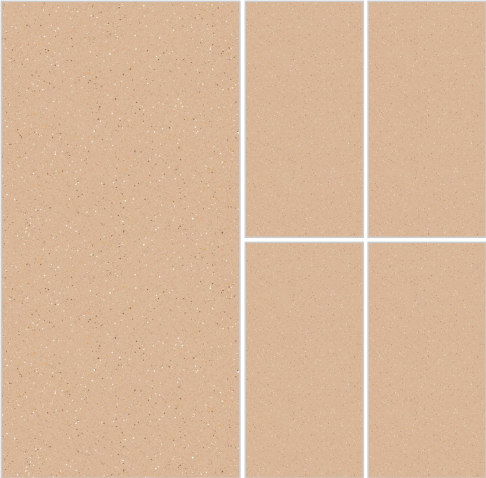
Travertino **Mashroom**



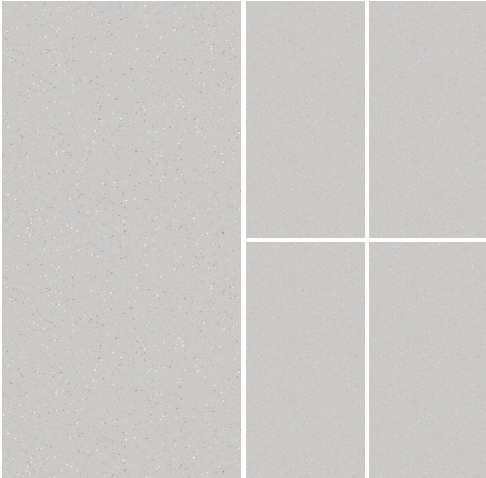
Teraazo **Beige**



Teraazo **Brown**



Teraazo **Grey**



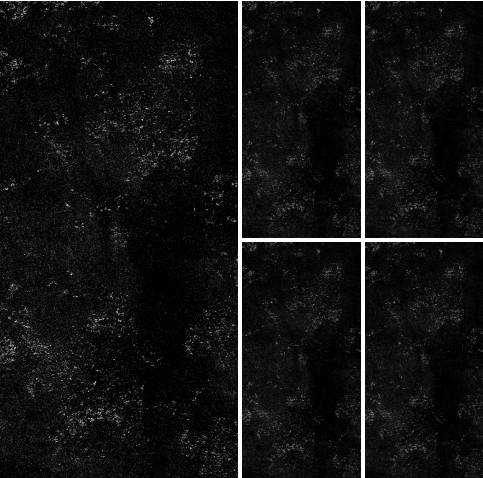
Teraazo **White**



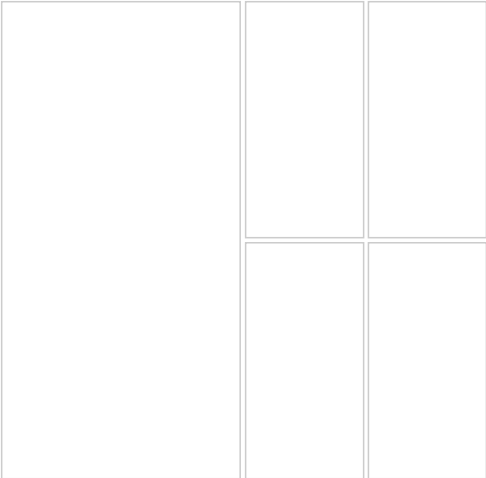
Teraazo **HL White**



Sparkle **Black**



Sparkle **White**



Sparkle **White**



DM-1

Bottochino **Pista**

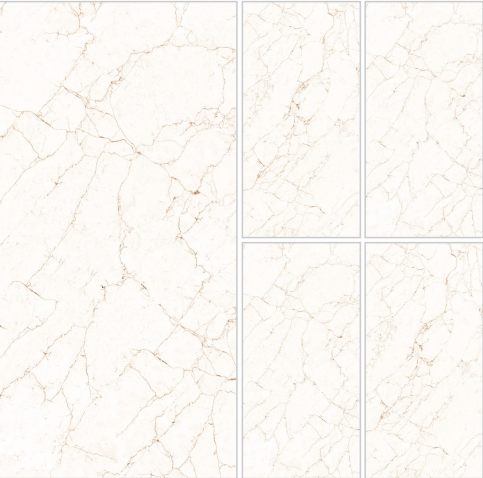


DM-1



Random **4**

Macau **Beige**



Random 2

Macau **Crema**



Random 3

End Match

Onyx **Silver**



End Match



Onyx **Silver**



Macau **Beige**

Roman **White**



Random 3

Rubycon



Random 4

End Match

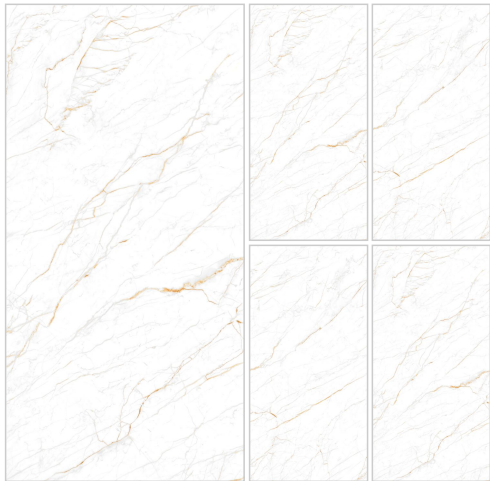
Thickness
9mm

MARQUE
CARVING

Size
600x1200mm



Satvario **Airo**



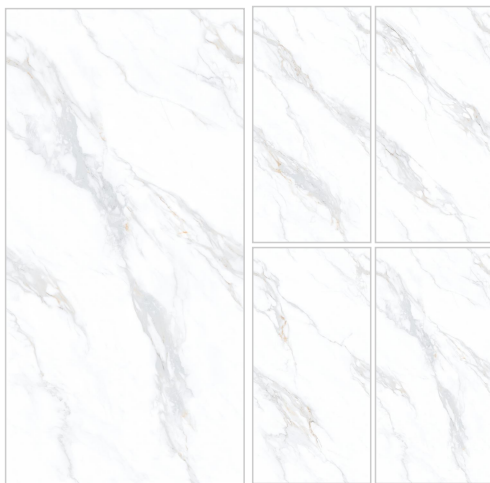
Random 2

Satvario **Classic**



Random 4

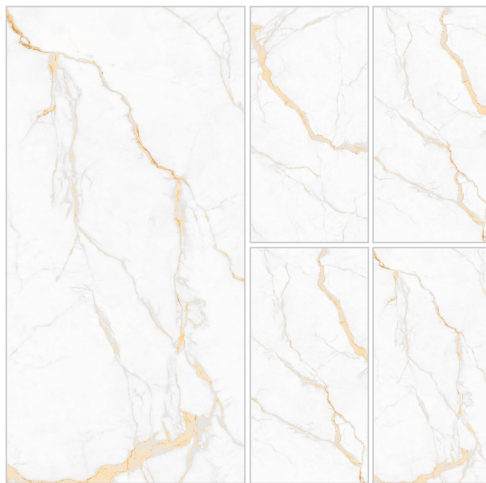
Satvario **Extreme**



Random 4

End Match

Satvario **Gold**



Random 3



Satvario **Airo**

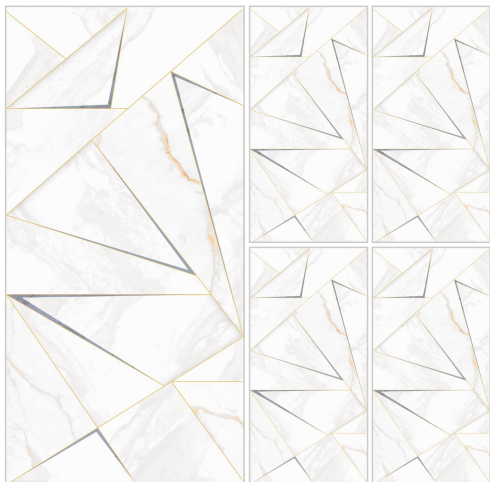
Thickness
9mm

MARQUE
CARVING

Size
600x1200mm



Satvario **HL-1**



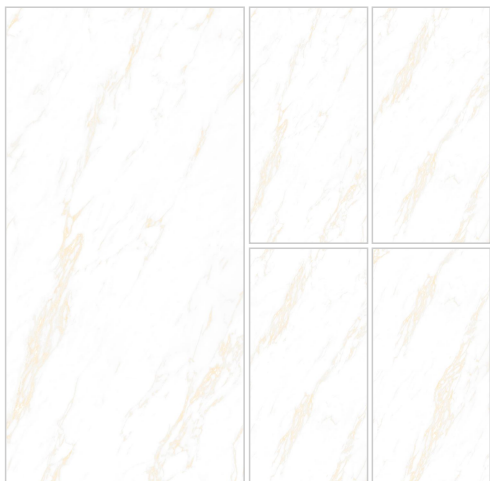
Satvario **Ice**



Random 3

End Match

Satvario **Lime**



Random 3

Satvario **Linken**



Random 4

End Match



Satvario **Ice** & Satvario **HL 1**

Thickness
9mm

MARQUE
CARVING

Size
600x1200mm

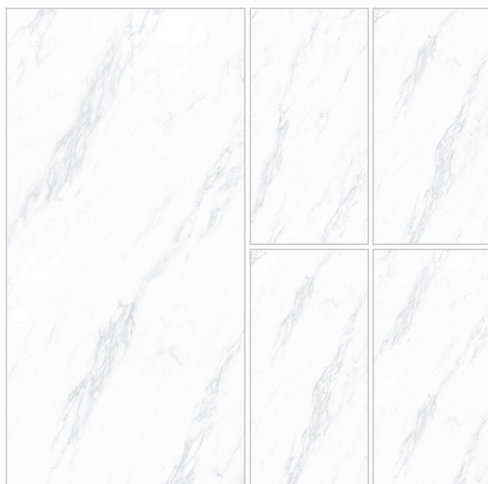


Satvario **Natural**



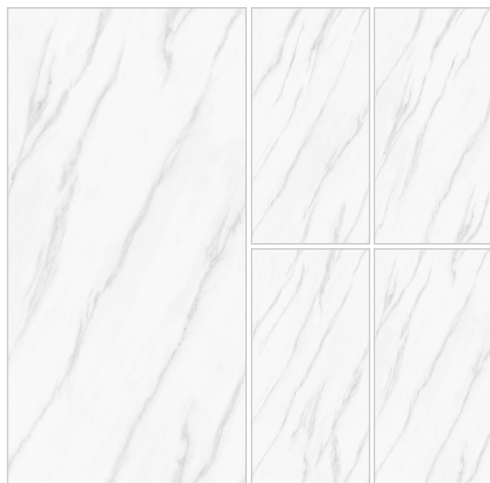
Random 3

Satvario **Sky**



Random 3

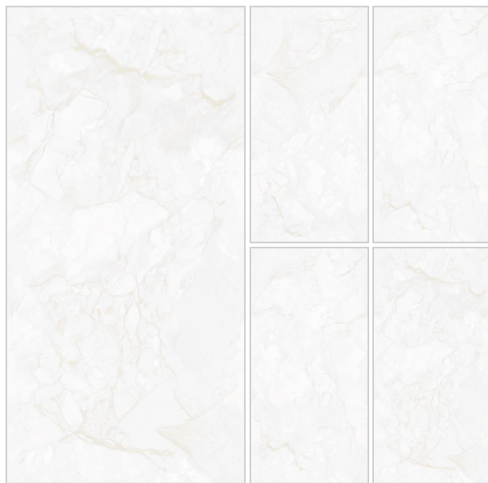
Satvario **Viva**



Random 4

End Match

Crv Aquila **Pearl**



Random 3

End Match



Satvario **Natural**

Thickness
9mm

MARQUE
CARVING

Size
600x1200mm

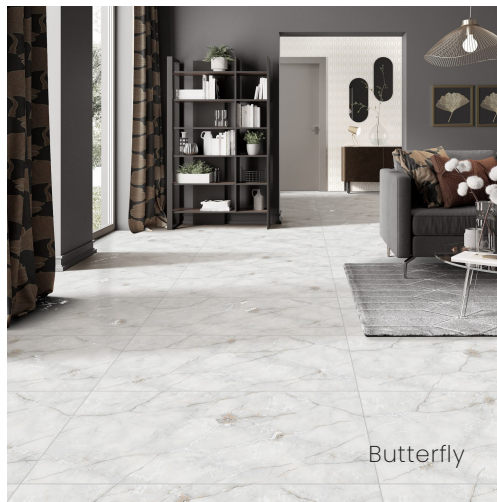


Crv **Butterfly**



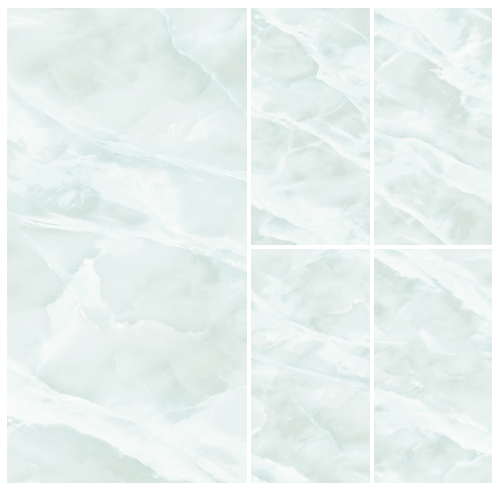
Random 4

End Match



Butterfly

Crv Picaso **Neon**



Random 6

Crv Picaso **Ocean**

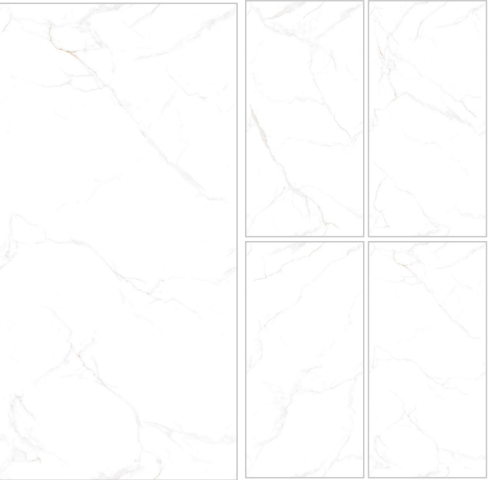


Random 2



Picaso **Ocean**

Crv Satvario **Lecco**



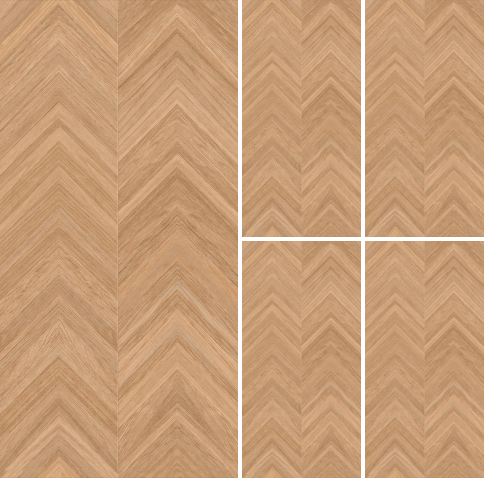
Random 4 End Match

Galaxy **White**



Random 4

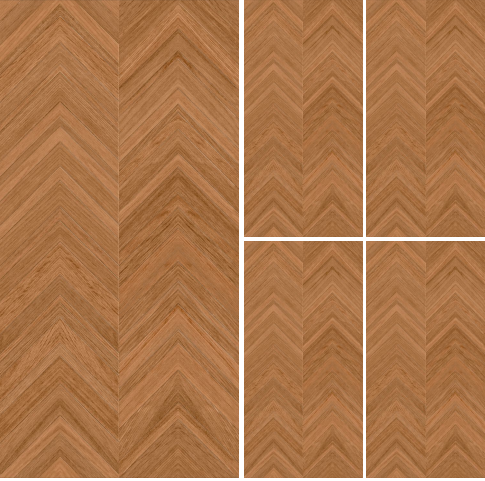
Berry **Desert**



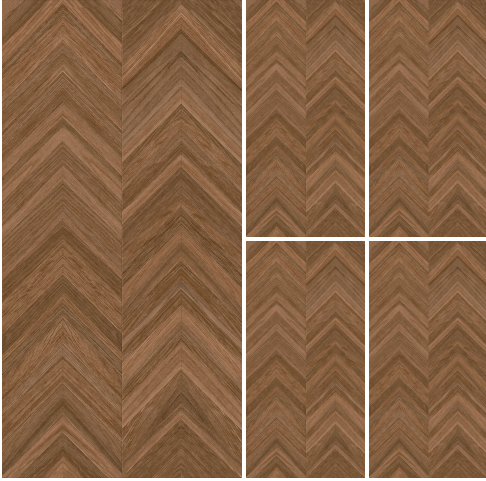
Berry **Grey**



Berry **Red**



Berry **Wenge**



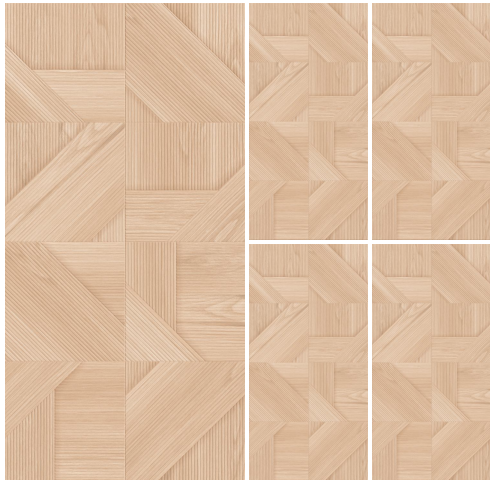
Thickness
9mm

MARQUE
CARVING

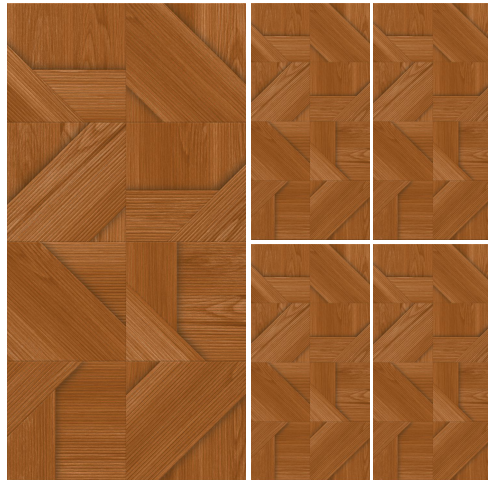
Size
600x1200mm



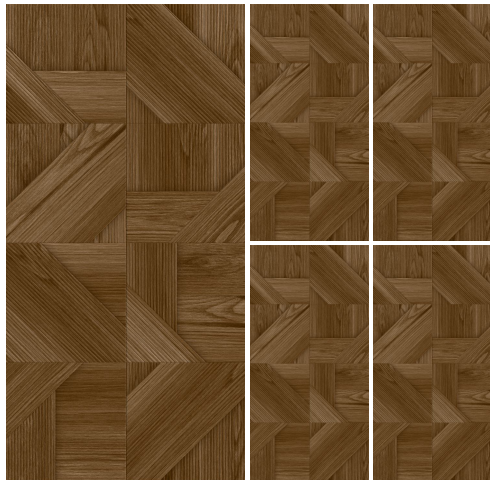
Ghana **Beige**



Ghana **Brown**



Ghana **Wenge**



Ghana **Wenge**



Ghana **Beige**

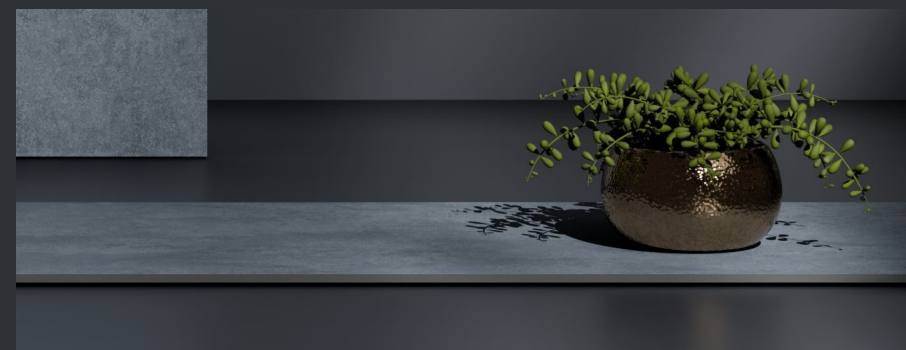
explore the edges

An intersection of
detail, durability, and
artistry — made to
elevate every space.

Matt COLLECTION

The Matt Collection celebrates simplicity, sophistication, and the timeless appeal of understated design. With its soft-touch finish and muted elegance, this collection brings harmony to modern interiors. Each tile is crafted to offer a seamless blend of texture and tone — creating spaces that feel balanced, warm, and effortlessly contemporary.

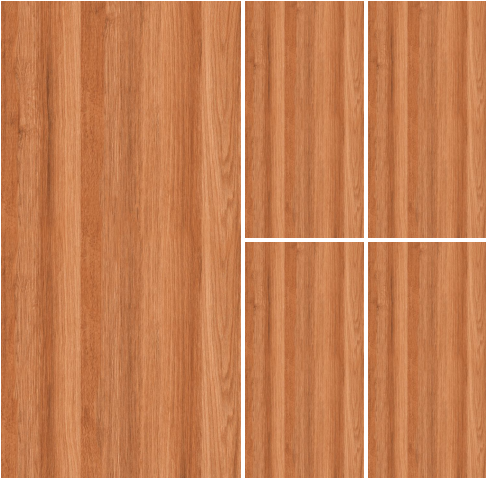
Built for durability and designed for everyday living, our matt surfaces reduce glare, provide better grip, and maintain their refined appearance for years. From urban homes to minimal commercial spaces, this collection is the perfect fusion of performance and design.



Alpine **Nature**



Kempas **Red**



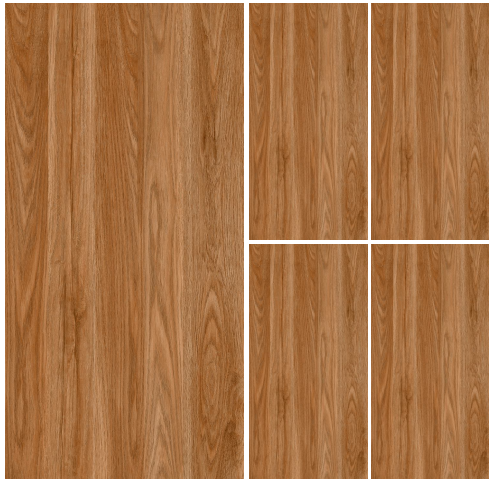
King **Wood**



Maple **Oak**



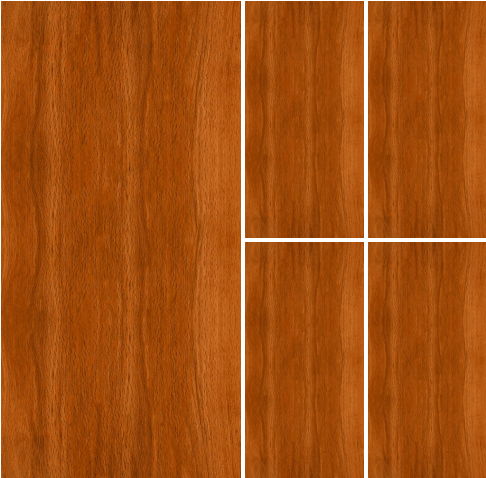
Maple **Walnut**



Teak **Grey**



Tiger **Wood**



Arizona **Beige**



Random 4

Arizona **Grey**



Random 4

Thickness
9mm

mate
COLLECTION

Size
600x1200mm



Ferro **Grey**



Random 5

End Match

Ferro **Sky**



Random 5

Filito **Grey**



Random 4

Fossil **Pearl**

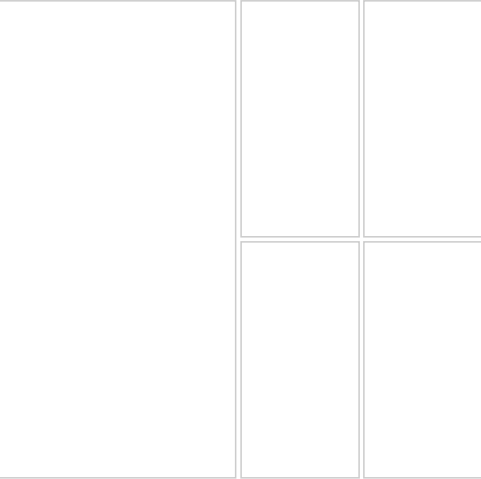


Random 1

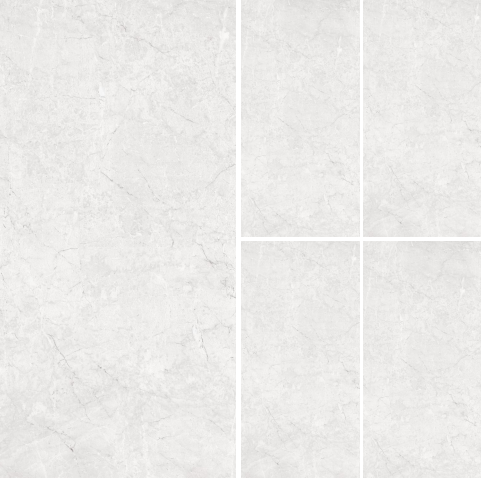


Fossil **Pearl**

Milk **White**



Quick **Grey**



Quick **Silver**

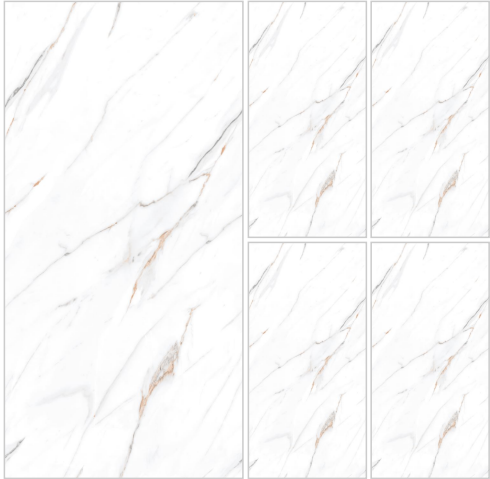


Random 2

Random 2



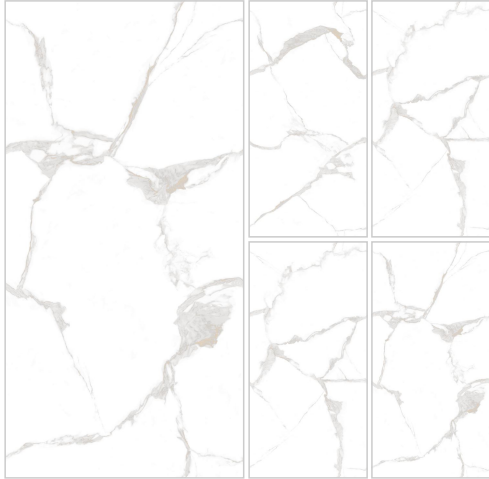
Satvario **Bianco**



Random 1

End Match

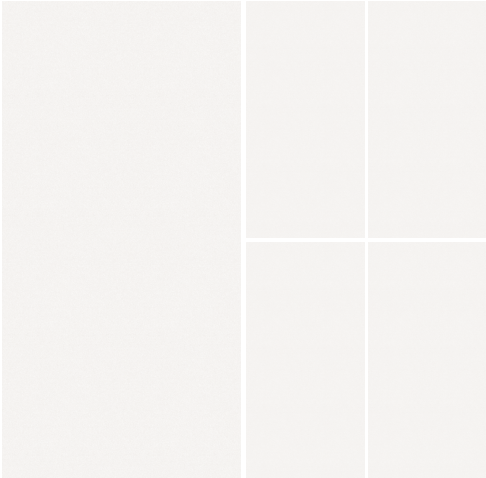
Satvario **Grey**



Random 3

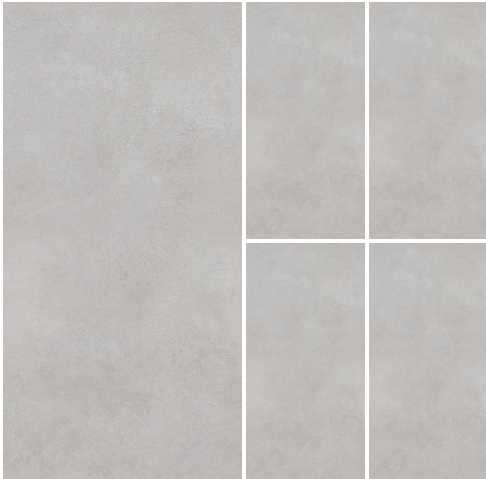
End Match

Sico **Grey**

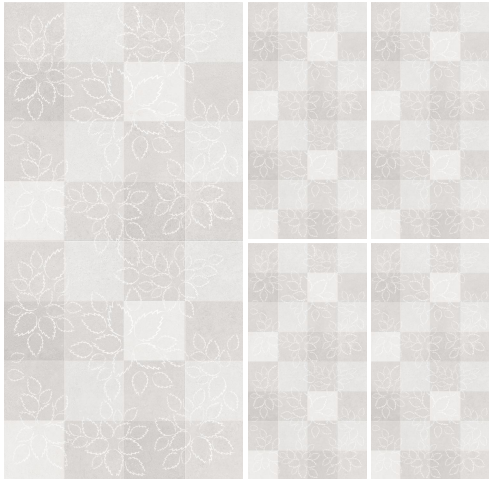


Sico **Grey**

Matic **Grey**

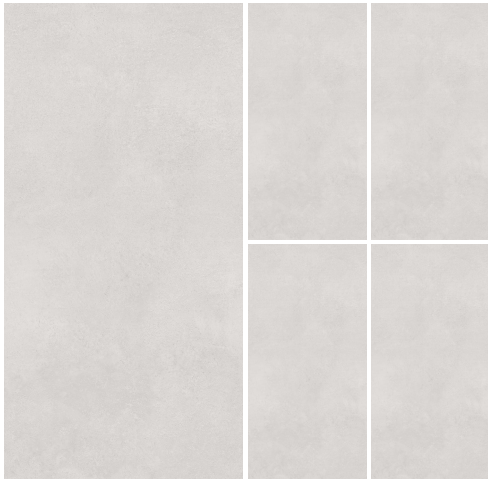


Matic **HL1**

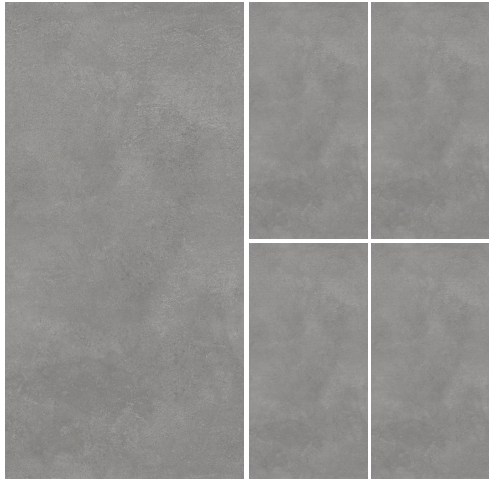


Matic **Steel**

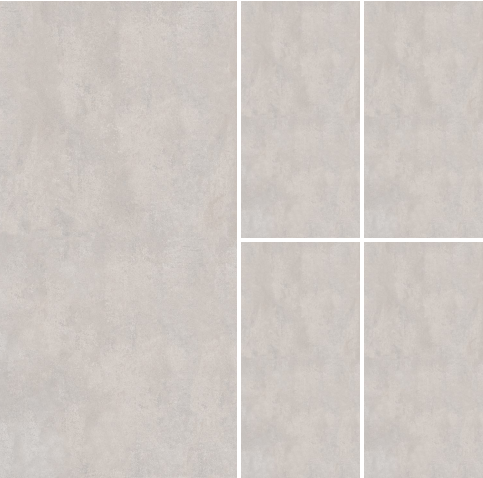
Matic **Snow**



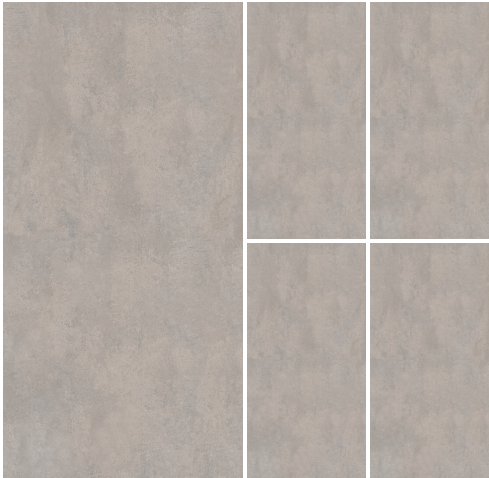
Matic **Steel**



Nova **Ash**



Nova **Smoke**

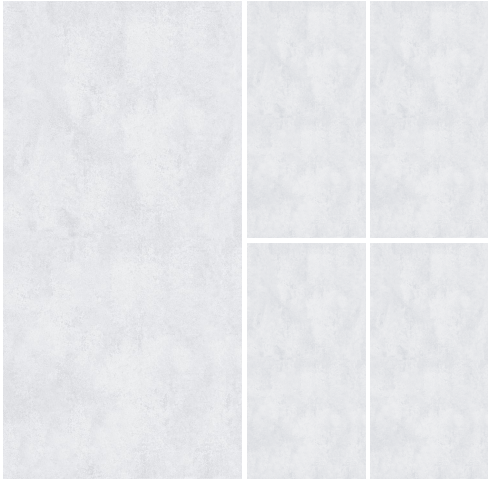


Nova **Sky** & Nova **Navy**

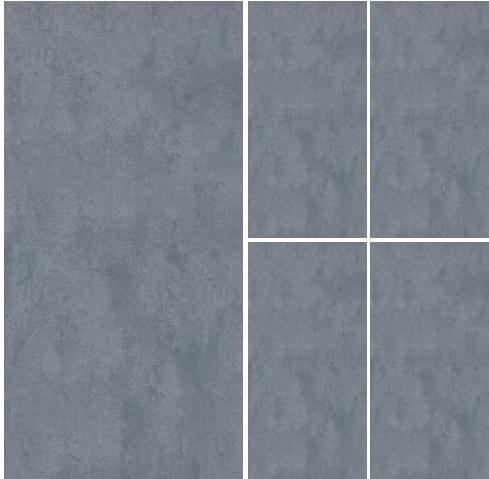


Nova **Smoke** & Nova **Ash**

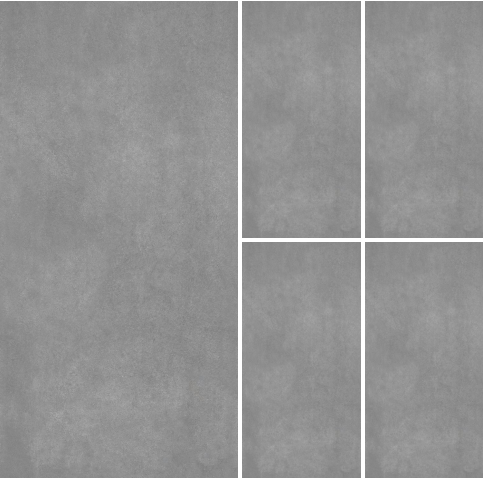
Nova **Sky**



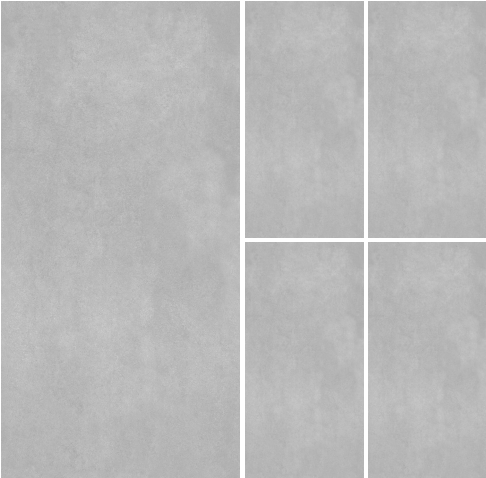
Nova **Navy**



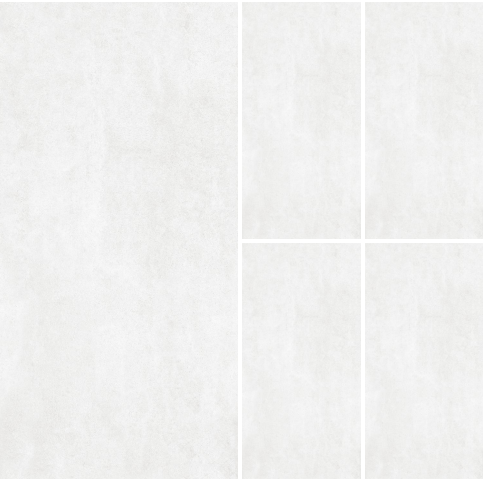
Stonela **Dove**



Stonela **Grey**



Stonela **Silver**



TECHNICAL DETAIL

CHARACTERISTIC	STANDARD AS PER ISO13006:2018/ EN14411 Gr.BIa	STANDARD AS PER IS 15622:2017 Gr.BIa	METHOD OF TESTING	MEAN VALUE OF SIGNOVA TILES
Regulatory Properties				
Deviation in Length and Width	±0.30 % (±1.00 mm)	±0.10 %	ISO 10545-2/IS 13630-1	± 0.10 %
Deviation in Thickness	±5.0 % (± 0.50 mm)	±5.0 %	ISO 10545-2/IS 13630-1	± 5.0 %
Straightness in Side	±0.30 % (± 0.80 mm)	±0.10 %	ISO 10545-2/IS 13630-1	± 0.10 %
Rectangularity	±0.30 % (±1.50 mm)	±0.10%	ISO 10545-2/IS 13630-1	± 0.10 %
Surface Flatness Central Curvature	±0.40 % (± 1.80 mm)	±0.50 %	ISO 10545-2/IS 13630-1	± 0.20 %
Surface Flatness Edge Curvature	±0.40 % (± 1.80 mm)	±0.50 %	ISO 10545-2/IS 13630-1	± 0.20 %
Surface Flatness Warpage	±0.40 % (± 1.80 mm)	±0.50 %	ISO 10545-2/IS 13630-1	± 0.10 %
Surface Quality	>95% defects free	>95% defects free	ISO 10545-2/IS 13630-1	>95% defects free
Small Color Difference (For Plain Colour)	ΔE <1.00	N.A.	ISO 10545-16	ΔE <0.80
Glossiness (Satin/Posh)	As per Manufacturer	As per Manufacturer	Gloss Meter 60°	15 ≤ Gloss Value ≤ 25
Glossiness (Matt/CRV)	As per Manufacturer	As per Manufacturer	Gloss Meter 60°	7 ≤ Gloss Value ≤18
Glossiness @ Value)##	As per Manufacturer	As per Manufacturer	Gloss Meter 60°	≤ 7
Structural Properties				
Water Absorption	≤0.50 %	≤0.080 %	ISO 10545-3/IS 13630-2	≤0.080 %
Bulk Density	As per Manufacturer	Min. 2.20 g/cc	ISO 10545-3/IS 13630-2	> 2.28 gm/cc
Massive Mechanical Properties				
Modulus of Rupture	Min. 35.0 N/mm²	Min. 35.0 N/mm²	ISO 10545-4/IS 13630-6	Min. 37.0 N/mm²
Breaking Strength Thickness ≥7.5 mm	Min 1300.0 N	Min 1300.0 N	ISO 10545-4/IS 13630-6	Min 1500.0 N
Surface Mechanical Properties				
MOH'S Hardness #	As per Manufacturer	Min. 5	BS EN 15771/IS 13630-13	Satin,Posh & Matt, CRV Min 6
Surface Abrasion Resistance #	As per Manufacturer	Min. Class II	ISO 10545-7/IS 13630-11	Satin,Posh & Matt, CRV Min III
Thermal Hygrometric Properties				
Moisture Expansion	Max. 0.06% (0.6 mm/m)	Max 0.02 mm/m	ISO 10545-10/IS 13630-3	Max 0.02 mm/m
Thermal Expansion(COE) at 100°C	As per Manufacturer	Max. 6.0 x 10-6	ISO 10545-8/IS 13630-4	Max. 6.0 x 10-6
Thermal Shock Resistance	Min 10 Cycle	Min 10 Cycle	ISO 10545-9/IS 13630-5	Min 10 Cycle
Impact Resistance(COR) #	Min. 0.55	Min 0.55	ISO 10545-5/IS 13630-14	Min 0.55
Frost Resistance	As per Manufacturer	As per Manufacturer	ISO 10545-12/IS 13630-10	Frost Proof
Crazing Resistance at 7.5 bar	4 Cycle	4 Cycle	ISO 10545-11/IS 13630-9	4 Cycle
Chemical Properties				
Resistance to Staining Glazed	Min. Class 3	Min Class 1	ISO 10545-14/IS 13630-8	Min. Class 4/ Min. Class 1
Resistance to Household Chemicals & Swimming Pool Salts Glazed	Min Class GB	Min Class AA	ISO 10545-13/IS 13630-8	Min Class GB/Min Class AA
Resistance to Low Concentrate Acid and AlkalIs Glazed	As per Manufacturer	As per Manufacturer	ISO-10545-13/IS 13630-8	Min Class GLB*** / Min Class A***
Resistance to High Concentrate Acid and AlkalIs Glazed	As per Manufacturer	As per Manufacturer	ISO-10545-13/IS 13630-7	Min Class GHB*** / Min Class A***
Safety Properties				
Skid Resistance -(DCOF-WET PENDULUM)##	As per Manufacturer	As per Manufacturer	BS 7976-2	Satin, Posh ≥P1 Matt/CRV ≥P2
Slip Resistance -Satin/Posh/ Matt/CRV (DCOF- R Value) ##	As per Manufacturer	As per Manufacturer	DIN 51130	R9 to R13
Lead and Cadmium release	As per Manufacturer	N.A.	ISO-10545-15	Does not yield Pb &Cd

* Whichever is Lower
** With nano technology (Polished Vitrified tiles) Depending on Application area (low or high intensity of traffic)
*** Except Hydrofluoric Acid & it's compound
Tiles Intended for use on floor
For Floor tiles,as per customer requirement

PACKING
DETAIL

SIZE	TILE / BOX	COVERAGE AREA / BOX	WEIGHT
600x1200mm	2pcs	15.5 sq.feet	28 Kgs Note: Above All Sizes are in mm +/- 0.500 gms approx





AIRONA TILES LTD.

Address : At & Post: Dalpur, Katwad Road, Near Himmatnager, Ta.: Prantij, Dist.: Sabarkantha - 383 120, Gujarat - INDIA

+91 2770 240410 | +91 99256 28956 | 99099 67923 | info@signovatiles.com

www.signovatiles.com

